

What's in the Box?

- Marine Watch LT-ACE Annunciator Panel
- A mounting frame
- A bag with fastening material
- An RJ45 IP-rated connector kit
- This Quick Installation Guide



User Interface Basics

Switch Channels

Channel status clearly and graphically visualised.

User-configurable.

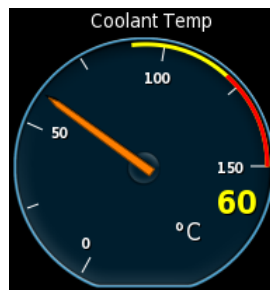


Analogue Channels

4-20 mA / 0-32 V.

Channel status clearly and graphically visualised.

User-configurable.



Buttons

The Home button toggles the menu page.



The Alarm button toggles the alarm list.



More Information

For the latest updated information, please contact your local distributor or visit the Marine Watch section of the Auto-Maskin website.

auto
MASKIN

Marine Watch
LT Series

Quick Installation Guide

LT-ACE

Annunciator Panel

P/N 1500120



Highlights

- Great overview
- Self-configuring
- No extra tool required
- 1-3 alarm pages
- Hi-res 5.7" touch-screen
- Ethernet communication
- Easy installation
- IP66/56 rated
- Multi-language support
- Cost-effective

Specifications

Measurements

Section	Width	Height	Depth	Unit
Size	162	130	67	mm
Cut-out	155	123	90	mm

Power Ratings

Section	Min.	Typ.	Max.	Unit
Power Supply	8	12/24	32	VDC
	-	0.4	2	A

Rear Side Connectors



C1
Power

C2
All Faults

C3

C4

Responsibilities

It is the sole responsibility of the installer to ensure that the installation work is carried out in a satisfactory manner and meet all applicable rules and regulations.

Installation

1. Remove the unit from the ESD Bag. Use the submitted Cabinet Frame and mount it in a suitable enclosure.
2. Attach the Power Supply connector (C1) and make sure the power ratings are within product specifications.
3. Attach desired I/O to connectors C1, C2, C3, and C4.
4. Use additional sealed DT connectors and the submitted RJ45 connector kit to ensure the IP rating.

Note! The panel is delivered without the mating Deutsch connectors.

A separate Connector Kit with four Deutsch DT-connectors and pre-wired power harness is available at P/N: 1006446.

For more information, see the **200E Series Installation Manual**.

Note

Auto-Maskin continuously upgrades its products and reserves the right to make changes and improvements without prior notice.

Configuration

At the first Power-Up, the user will be guided through the Setup Wizard:

1. Language selection. The language selection is valid through the remainder of the procedure.
2. Password confirmation. Choose the desired password.
3. Network settings. Make sure to follow common network configuration practices and take care when several units are used in the same network.

PC Connection/Setup

1. Connect a PC to the same Ethernet as the Marine Watch LT Panel.
2. Type the IP address into a browser. The factory default is **192.168.0.201**.
3. Log in to the unit
 - Username: **rp**
 - Default password: **1234**

For more information, see the **Marine Watch LT User Manual**.

Additional Documentation

Please visit the Auto-Maskin website <http://www.auto-maskin.com> for additional documentation.